

12.1 LOAD CELLS & JUNCTION BOXES

12.1.1 LOAD CELLS

- A range of C3 Approved load cells for all applications.
- Supplied with accessories where shown.
- Many more types available. Please ask for details.



UDB



UDA



SQB-S



DEE



ZSFY



Zemic L6N



Zemic BM6G

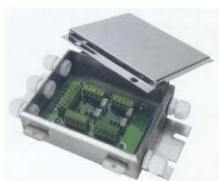


Zemic H8C

| MODEL | RANGE OF CAPACITIES kg | APPLICATION | MATERIAL | IP RATING | ACCESSORIES | PRICE £ |
|--------------|------------------------|-------------|-----------------|-----------|-------------|---------|
| UDB | 15-1500 | Bench/Floor | Aluminium | 65 | No | 45.00 |
| UDA | 100-500 | Floor | Aluminium | 65 | No | 85.00 |
| SQB | 1000-2500 | Platform | Steel | 67 | Yes | 95.00 |
| SQB-S | 1000-2500 | Platform | Stainless Steel | 68 | Yes | 140.00 |
| SQB-S | 3000-5000 | Platform | Stainless Steel | 68 | Yes | 195.00 |
| DEE | 100-500 | "S" | Steel | 65 | Yes | 85.00 |
| ZSFY | 10-40 tonnes | Weighbridge | Stainless Steel | 68 | Yes | 290.00 |
| Zemic L6N | 10-50 | Bench | Aluminium | 65 | No | 55.00 |
| Zemic L6E3 | 50-500 | Bench/Floor | Aluminium | 65 | No | 75.00 |
| Zemic L6G | 50-500 | Floor | Aluminium | 65 | No | 95.00 |
| Zemic B6N | 10-50 | Bench | Stainless Steel | 67 | No | 195.00 |
| BM6G (Small) | 10-50 | Bench | Stainless Steel | 69K | No | 295.00 |
| BM6G (Large) | 20-500 | Floor | Stainless Steel | 69K | No | 295.00 |
| H8C | 500-1500 | Platform | Steel | 67 | Yes | 125.00 |

12.1.2 JUNCTION BOXES

STAINLESS STEEL JUNCTION BOX



- Either stainless steel or aluminium housing. IP65 rating.
- Parallel or serial mode. 4, 6, & 8 cable options.
- Highly accurate individual potentiometers.



ATEX JUNCTION BOX

| MODEL | MATERIAL | MAX. NO. CABLES | PRICE £ |
|------------|-----------------|-----------------|---------|
| J-BOX-SS-4 | Stainless Steel | 4 | 75.00 |
| J-BOX-SS-6 | Stainless Steel | 6 | 75.00 |
| J-BOX-SS-8 | Stainless Steel | 8 | 75.00 |
| J-BOX-ATEX | Stainless Steel | 4 | 270.00 |

12.1.3 LOAD CELL ACCESSORIES



- Load cell feet available in M12 and M16 please specify at time of ordering.

| DESCRIPTION | PRICE £ |
|--|---------|
| Cup and ball self levelling feet for FW platforms | 20.00 |
| Stainless Steel cup and ball self levelling feet for FWS platforms | 30.00 |
| Weigh beam fixed rubber feet | 10.00 |
| Replacement weigh beam cable | 50.00 |

Prices exclude delivery, VAT and stamping fees (unless stated)

| | | | | | | | |
|-------------------|------------|--------------------------|------------------------|------------|---------|--------------------------|--------|
| PLATFORMS & BASES | INDICATORS | PROGRAMMABLE CONTROLLERS | PRINTERS & PERIPHERALS | LOAD CELLS | WEIGHTS | CERTIFICATION & DELIVERY | SPARES |
|-------------------|------------|--------------------------|------------------------|------------|---------|--------------------------|--------|